

08:19

◀ App Store



Log In

Sign Up

12:32



emos



7°C

☰ Excellent
💧 94.0%



All Devices



Room List

Testing

Scenes: 4 | Devices: 26 >



Turn All Off



Turn All On



Edit



Home



Scene



Message



Settings

12:32



emos



Add Device



Create Scene



Add Quick Toggle Card



Scan



7.0

Excellent

94.0%

Testing

Scenes: 4 | Devices: 26



Turn All Off



Turn All On

Edit



Home



Scene



Message



Settings

10:45



Add Device



GoSmart

Lighting



Air Quality Monitor E30300



Weather Station E5059

Cameras and Doorbells

Electrical



Bathroom Scale EV112



Multi-Mode Gateway IP-2000Z

Energy

Sensors



Multifunctional gateway IP-1000Z (Zigbee+BLE)



Thermo & Timer socket P56601FR/SH

Garden and Industry

Gateway Control

Small Home Appliances



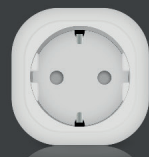
Indoor Socket (Wi-Fi)



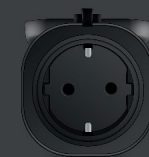
Outdoor Socket (Wi-Fi)

Large Home Appliances

Kitchen Appliances



Indoor Socket (Zigbee)



Outdoor Socket (Zigbee)

Outdoor Travel

Exercise and Health

Entertainment



Extension Cord IP-3003F



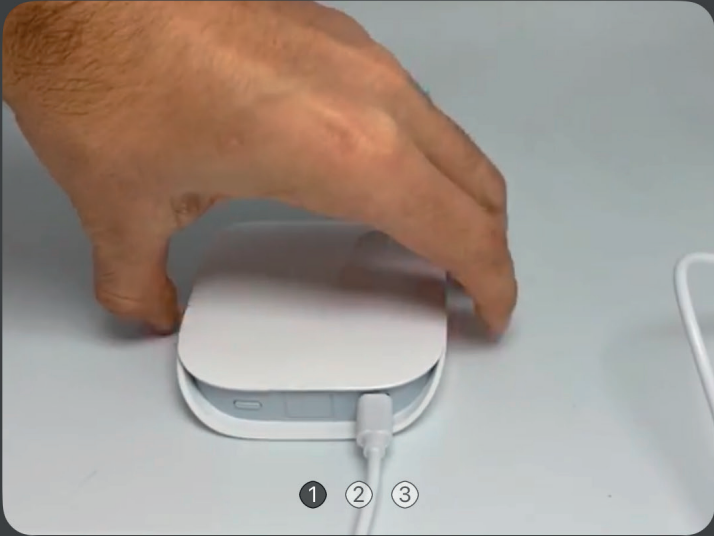
Extension Cord IP-3004S

Others

10:48 ↗



Reset Device



Power on the device

Next

10:48



Reset Device



Hold the RESET button until the front light starts to flash

Back

Next

10:48



Reset Device



Confirm the front light is flashing.

Back

Next



Enter Wi-Fi Information

Choose Wi-Fi and enter password



EmosCZ_Smart

Select Wi-Fi




Next

10:58 ↗



Add Device

1 device(s) being added 

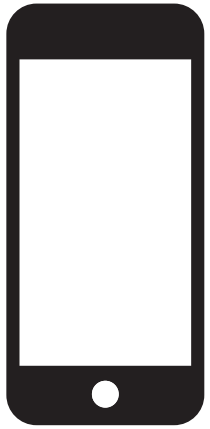


Wireless Zigbee&BLE Gateway

Being added



Done



2.4 GHz

5 GHz



