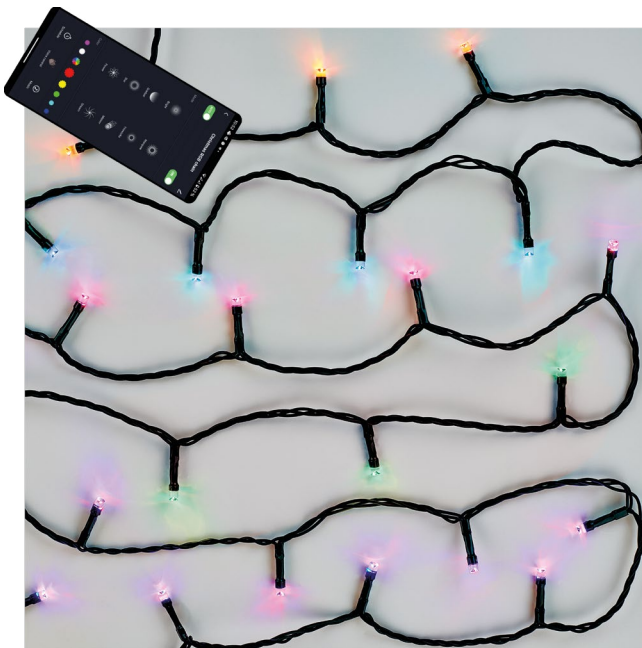


D4ZR01 | D4ZR02 | D4ZR03 | D4ZR04

GB | LED Christmas Lightning



Contents

Safety Instructions and Warnings	2
Package Contents	3
Technical Specifications	3
Installation	4
Controls and Functions	6
Troubleshooting FAQ	7

Safety Instructions and Warnings



Read the user manual before using the device.



Follow the safety instructions in the manual.

Do not connect the chain to power supply while it is still in packaging.

The light sources are not replaceable.

Do not interconnect with another Christmas light.

Disconnect from power before handling.

In the event of a malfunction, do not remove the LED bulbs and do not repair the chain yourself!

Do not tamper with the wiring.

Use only with the adapter enclosed with the product.

Suitable for both indoor and outdoor use.

If the light source ruptures or becomes damaged, do not use the chain and do not leave it connected to power; dispose of it safely.

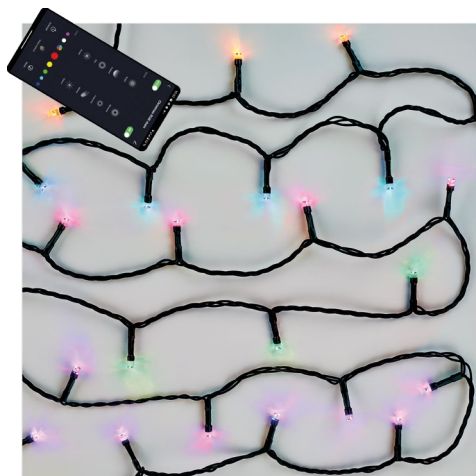
The product is designed for decorative lighting.

The product is not a toy; do not put it in the hands of children!

EMOS spol. s r.o. declares that products D4ZR01, D4ZR02, D4ZR03 and D4ZR04 conform to the basic requirements and other relevant provisions of directives and regulations. The device can be freely operated in the EU. The Declaration of Conformity can be found at <http://www.emos.eu/download>.

The device can be operated on the basis of general authorisation no. VO-R/12/11.2021-11.





Package Contents

1. Christmas RGB light chain
2. Adapter
3. User manual

Technical Specifications

Model	Protocol	Connection	No. of LEDs	Length	Input power	Power supply
D4ZR01	Wi-Fi	2.4 GHz (Wi-Fi IEEE 802.11b/g/n)	80	8 m	8.4 W	230 V AC / 6 V DC
D4ZR02	Wi-Fi	2.4 GHz (Wi-Fi IEEE 802.11b/g/n)	120	12 m	8.4 W	230 V AC / 6 V DC
D4ZR03	Wi-Fi	2.4 GHz (Wi-Fi IEEE 802.11b/g/n)	180	18 m	8.4 W	230 V AC / 6 V DC
D4ZR04	Wi-Fi	2.4 GHz (Wi-Fi IEEE 802.11b/g/n)	240	24 m	8.4 W	230 V AC / 6 V DC



Installation

Downloading the App

The app is available for Android and iOS on Google Play and App Store. Download the app by scanning the corresponding QR code.

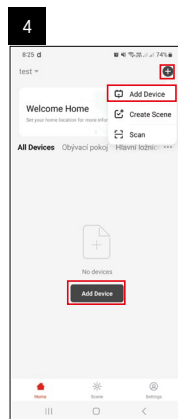
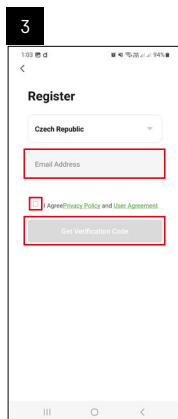
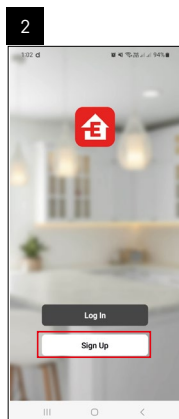
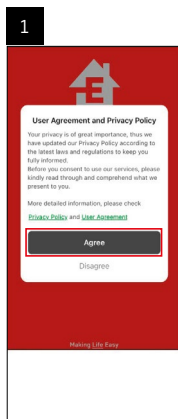


Setting the Router

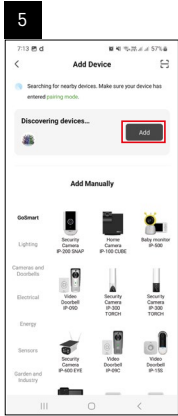
The Christmas light chain only supports 2.4 GHz Wi-Fi (does not support 5 GHz).



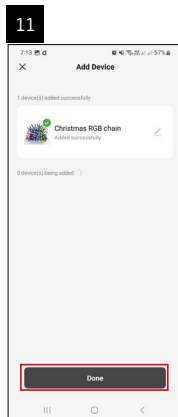
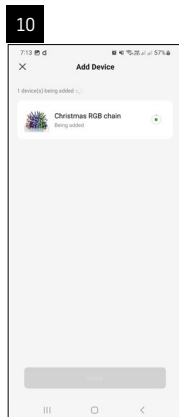
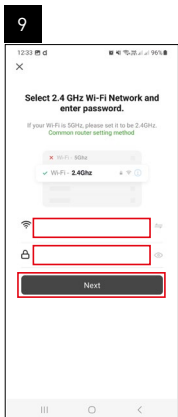
EMOS GoSmart Mobile App



1. Open EMOS GoSmart and confirm the privacy policy by tapping Agree.
2. Tap Sign Up.
3. Enter a valid e-mail address and choose a password. Confirm that you agree to the privacy policy. Confirm by tapping Sign Up.
4. Tap Add Device.



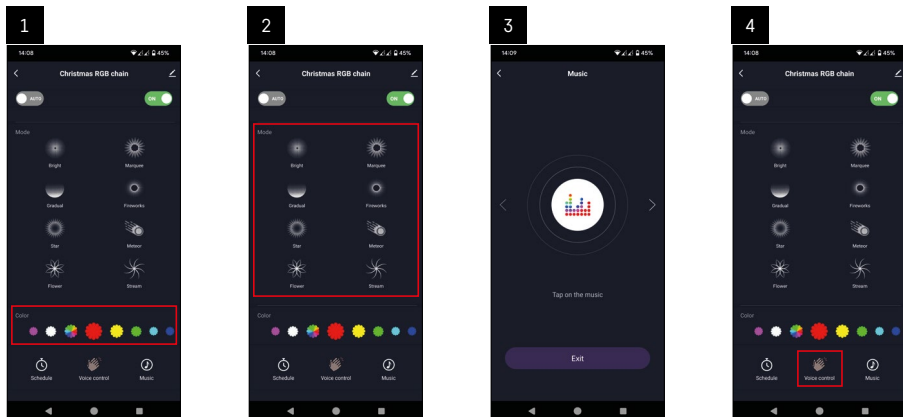
5. Once the automatic search for devices completes, tap Add.
6. Choose the category and type of product.
7. Turn on the device and confirm by tapping Next.
8. Confirm that the indicator is flashing. Confirm by tapping Next.



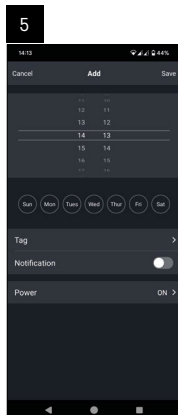
9. Enter the name of the Wi-Fi network and password. Confirm by tapping Next.
10. Pairing with the device is underway.
11. Device paired successfully. Confirm by tapping Done.



Controls and Functions



1. Color – basic panel for adjusting the RGB colours.
2. Mode – basic panel for setting 8 different modes.
3. Music – switches to a mode where the lights glow in tune with the music from the phone.
4. Voice control – switches to a mode where the lights glow in tune with the voice coming from the phone.



5. Schedule – a function that allows turning the chain on/off after a set amount of time.



Troubleshooting FAQ

The devices are not pairing. What should I do?

- Make sure you are using a 2.4 GHz Wi-Fi network and have a sufficiently strong signal.
- Give the app all permissions in the settings.
- Check that you are using an up-to-date version of the mobile operating system and the latest version of the app.

I am not receiving notifications. Why?

- Give the app all permissions in the settings.
- Turn on notifications in the app's settings (Settings -> App notifications).

Who is allowed to use the device?

- The device must always have an admin (owner).
- The admin can then share the device with other people in the household and assign them rights.



